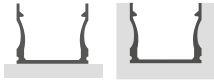


PURE12 S

LED Aufbauprofil

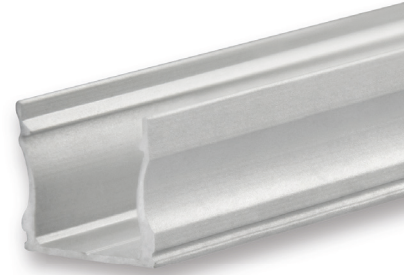
■ SILBER □ WEISS RAL 9010 ■ SCHWARZ RAL 9005

max.
12 mm



MASS-KONFEKTION &
OEM-FERTIGUNG AUF ANFRAGE
Bis 6 m | RAL-Farben

Kühlmasse: 118 g/m | Das Aufbauprofil PURE12 S ist für LED Flexbänder mit einer maximalen Breite von 12 mm konzipiert und wird universell im Innenbereich eingesetzt. Die Abdeckung ist in opal/satiniert (65 % Transluzenz), klar (85 % Transluzenz) oder schwarz/matt (25 % Transluzenz) verfügbar. Es verdeckt oberseitig komplett das Alu-Profil, somit ist nur noch die LED Lichtleiste sichtbar.

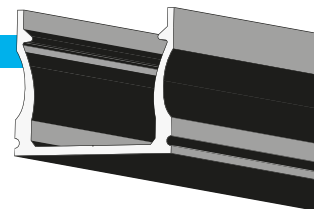


PROFIL

- 2 m 114787 | MONTAGEKLAMMER 114776
- 2 m 114789
- 2 m 114788

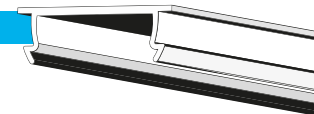
PROFIL

200 CM



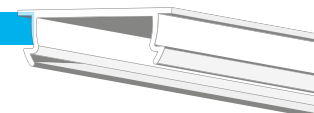
COVER 40

65 %



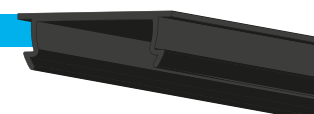
COVER 41

85 %



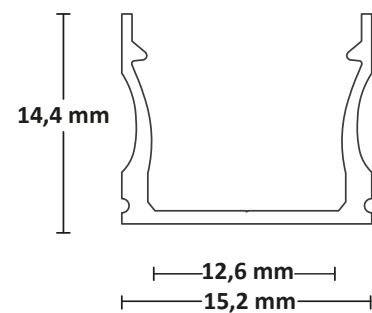
COVER 48

25 %



ABDECKUNGEN & ENDKAPPEN

COVER 40 65 % opal/satiniert	ENDKAPPEN PVC
2 m 114738 2,5 m 114739	■ EC77 114757 Kabel EC78 114760 □ EC77W 114759 Kabel EC78W 114761 ■ EC77B 114758 Kabel EC78B 114762
COVER 41 85 % klar	
2 m 114740	
COVER 48 25 % schwarz/matt	
2 m 114747	

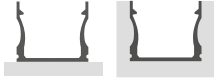


PURE12 S

LED Surface mount profile

■ SILVER □ WHITE RAL 9010 ■ BLACK RAL 9005

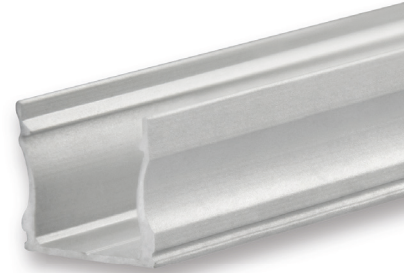
max.
12 mm



MADE-TO-MEASURE CONFECTIONERY &
OEM PRODUCTION ON REQUEST

Up to 6 m | RAL colours

Cooling mass: 118 g/m | The PURE12 S mounting profile is designed for LED flexstrips with a maximum width of 12 mm and is universally used for interior applications. The cover is available in opal/satin (65% translucence), clear (85% translucence) or black/matt (25% translucence). It completely conceals the aluminium profile on the upper side, so only the LED batten luminaire is visible.



PROFILE

- 2 m 114787 | INSTALLATION CLIP 114776
- 2 m 114789
- 2 m 114788

COVERS & END CAPS

COVER 40	END CAPS
65 % opal/satinised	PVC
2 m 114738	■ EC77 114757 Cable EC78 114760
2,5 m 114739	□ EC77W 114759 Cable EC78W 114761
	■ EC77B 114758 Cable EC78B 114762
COVER 41	
85 % clear	
2 m 114740	
COVER 48	
25 % black/matt	
2 m 114747	

PROFILE

200 CM

COVER 40

65 %

COVER 41

85 %

COVER 48

25 %

